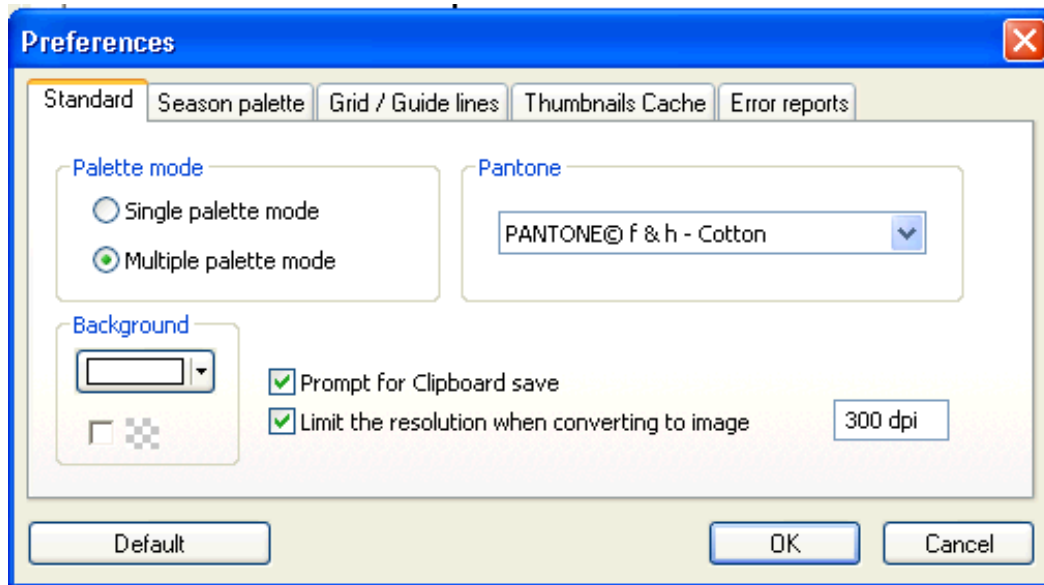


# 8. SETTING PREFERENCES

To set the Preferences for Kaledo Print:

Click File >> Preferences

There are 5 tabs: Standard, Season Palette, Grid/Guide Lines, Thumbnails Cache and Error Reports



## STANDARD

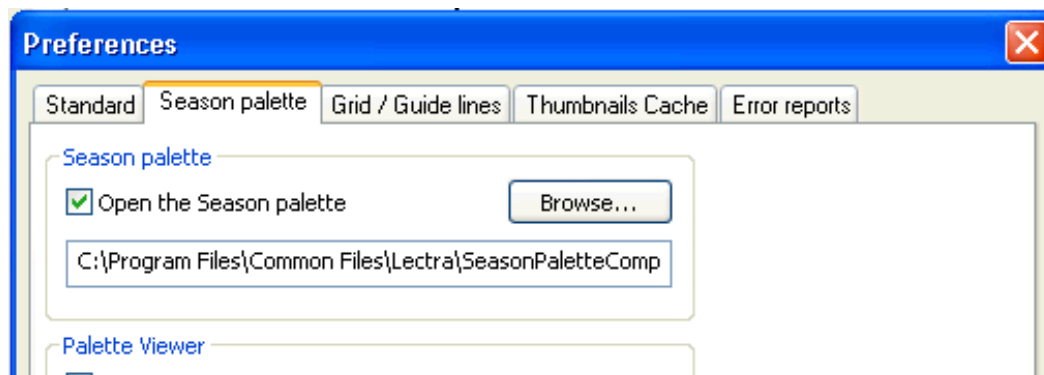
**PALETTE MODE:** Allows you to select between Single and Multiple Palette Modes. Indicated by an **M** or **S** at bottom right of window. *True color images are not affected by this setting.*

**Single Palette Mode:** this mode forces one palette on all reduced images within a file.

**Multiple Palette Mode:** allows each reduced image in a file to keep it's own palette. Allows you to work with multiple images and multiple palettes in one file.

**BACKGROUND:** In this tab, you can change the default background color of your workspace. For a transparent background check: . You must choose a background color other than white to see the check pattern.

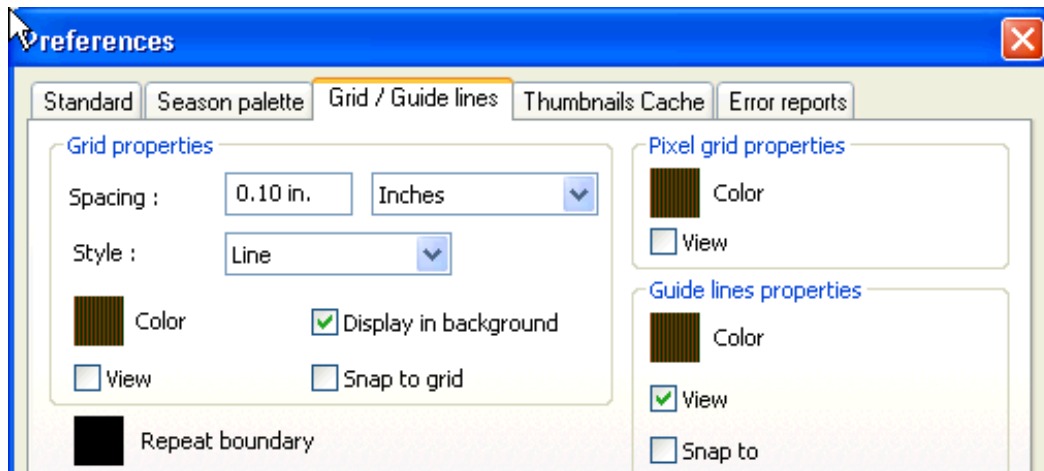
**RESOLUTION:** here you can limit the resolution when converting to an image.



## SEASON PALETTE

Season Palettes can be created and saved within Kaledo Print. What is handy about this is that you can create a palette for a season, save it and then have it always open with the program. You are also able to open the Season Palette in Kaledo Knit and Kaledo Weave. This tab allows you to locate the path of your Season Palette, select it and have it open with the start of the program.

# 8. SETTING PREFERENCES

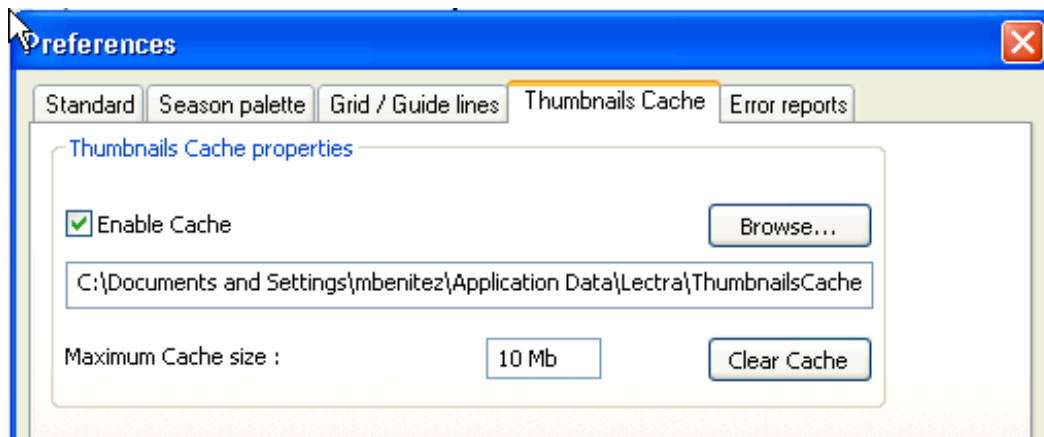


## GRID / GUIDE LINES

**Grid Properties:** Allows you to select the spacing between grid lines, the unit of measurement, the color of the grid lines, if it shows in the foreground or background, if items should snap to the grid and if the grid is visible or not.

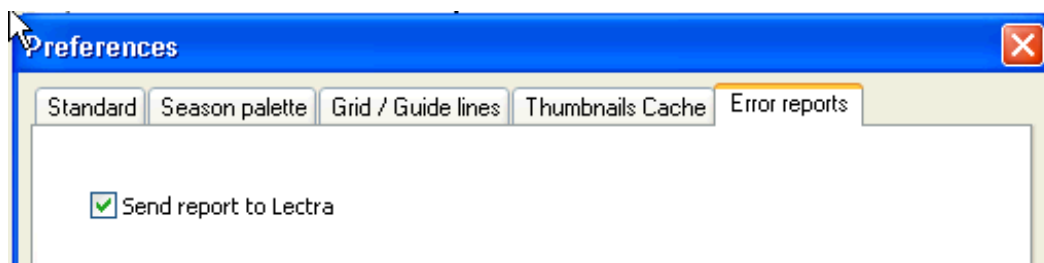
**Pixel Grid:** This is the grid that shows up when one is zoomed in (at the pixel level). You can choose the color for this grid here as well as if you want it the pixel grid to be visible or not.

**Guide Lines Properties:** guide lines are dragged out from the ruler. They are used to facilitate lining up items in the design window. Here you can choose the color of the guide lines as well as if objects snap to them or not.



## THUMBNAILS CACHE

This tab is used to set the maximum amount of memory used by Kaledo Print for thumbnails and the path where the thumbnails should save. This is usually left at the default setting and should only be changed if you are having memory issues. If you have memory issues you should also clear the cache.



## ERROR REPORTING

Check this box if you want to send error reports to Lectra. For example, if the program crashes, this would send Lectra a report that states what happened to crash your system. Lectra uses this information to help troubleshoot bugs in the software and for writing future versions of software or updates. I usually leave this checked on.