


4. WORKING WITH COLOR

The **Utility toolbar** displays the current color.

To make a color become the current color:

- use the **Eyedropper** to select a color from an image
- mix the color in the **Color Chooser**
- select a color from the **Palette Viewer**.



To use the  **Eyedropper** tool: Click on the Eyedropper icon in the Utility toolbar and then click on a color in the design. The color picked will then show up in the Current color box. You can preview what color you are selecting by hovering over the image. The color you are going to select that is under the cursor will be shown at the bottom of the window.

COLOR CHOOSER

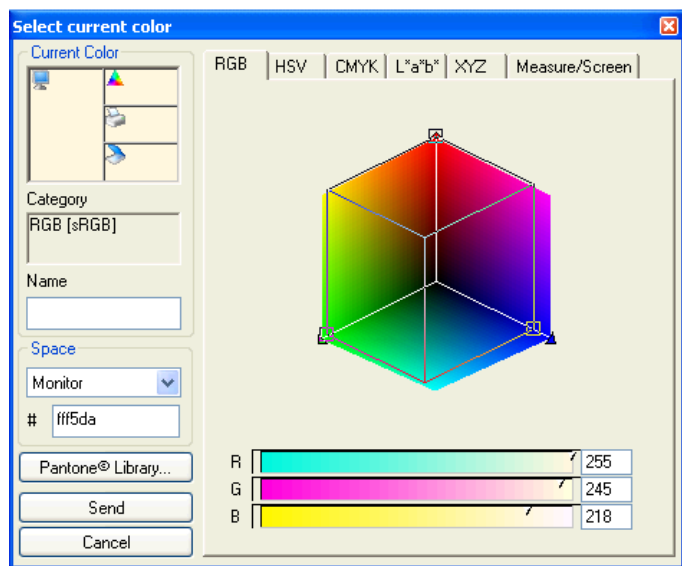
Double click the  Current Color box to access the **Color Chooser**

or

COLOR >> Choose Current Color

In the **Color Chooser**, you can:

- select a color
- mix a color
- select a color from the Pantone library
- read a color using a spectrophotometer



Use the tabs to cycle thru the different color systems such as RGB (screen) and CMYK (print).

You can name your color here by using the text box labeled NAME.

By clicking on the Pantone Library button, it automatically tries to match your current color to the closest Pantone color.

COLOR SPACES

LAB: communicates colors accurately across devices. device independent.

RGB: Red, Green, Blue. color mixing. device dependent.

CMYK: Cyan, Magenta, Yellow, Black color mixing. used in print. device dependent.

HSV: Hue, Saturation, Value color mixing. device dependent.

